

MacroInvertebrate Characteristics

The vast majority of invertebrates collected and analyzed in bioassays are freshwater insects. These insects can be sorted and identified and can give insight into the condition of the stream or river where they are found. See the next page for definitions of the body parts of insects and other pertinent terms.

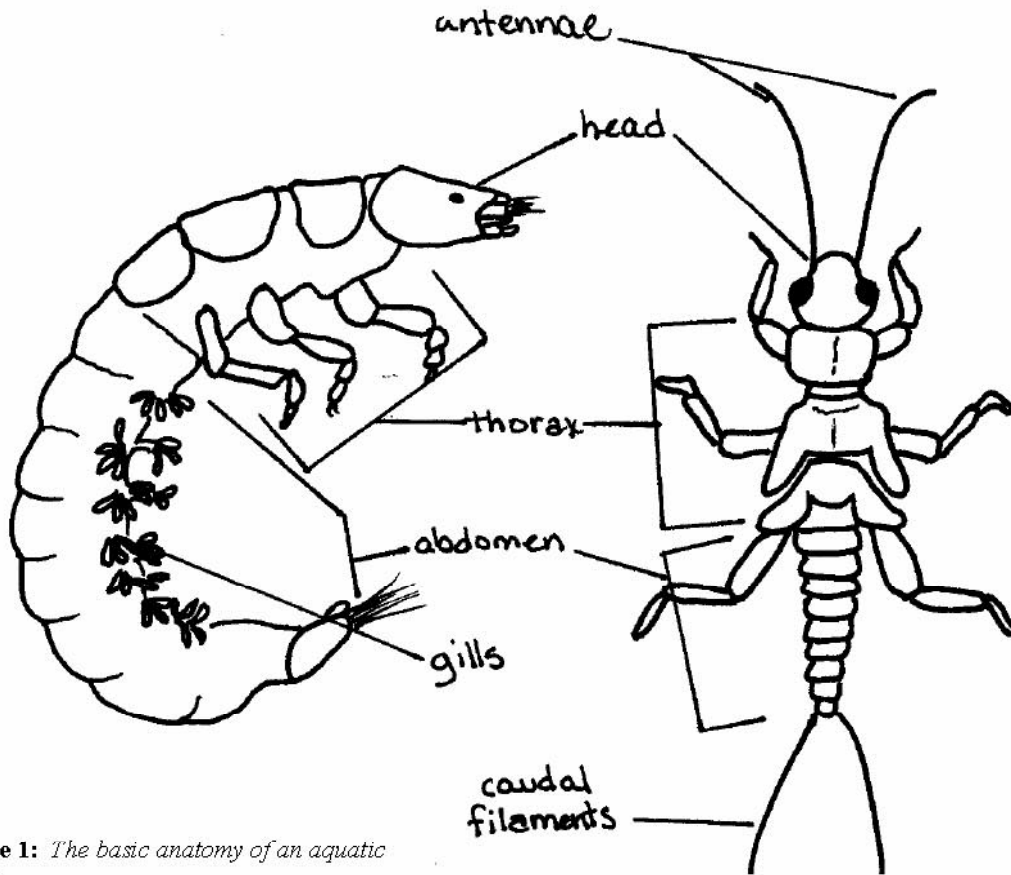


Figure 1: *The basic anatomy of an aquatic insect.*

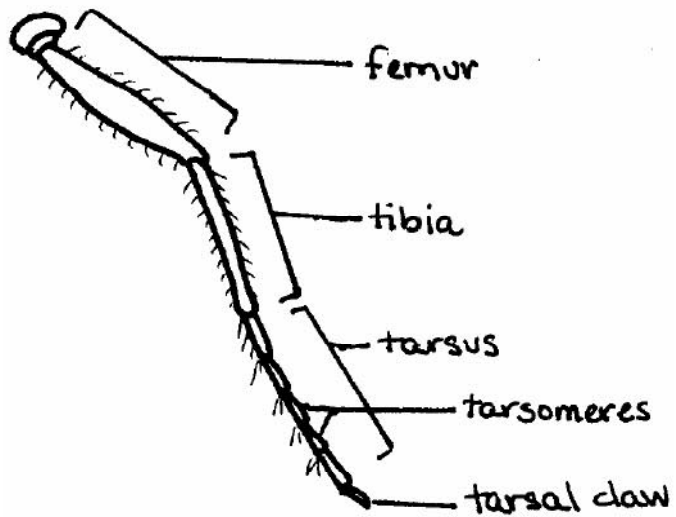


Figure 2: *Anatomic detail of an insect leg.*